



£1,350 PCM

Victoria Grove, Shepton Mallet BA4 5NJ

Detached House | 4 Bedrooms | 2 Bathrooms

01749 681356



www.keyringlettings.co.uk



Step Inside

Key Features

- A spacious, well presented four bedroom detached property close to the town centre and local amenities
- Recently refurbished and offered unfurnished
- Double glazed windows and doors
- Gas fired central heating
- Downstairs cloakroom
- Modern fitted kitchen with cooker, hob and extractor - space for other appliances
- Dining area leading to conservatory
- En-suite shower room to master bedroom
- Family bathroom
- Integral garage and driveway parking
- Enclosed rear garden

Property Description

A well presented, four bedroom detached house, close to the town centre and local amenities. Living room, kitchen/diner, cloakroom, conservatory, en-suite to master bedroom, family bathroom and integral garage. Gas central heating, UPVC double glazed windows and doors, driveway parking and enclosed rear garden. Available now.

Main Particulars

KeyRing Lettings are delighted to offer this modern, four bedroom detached house to rent in Shepton Mallet. Close to the town centre and local amenities, this spacious family home offers: entrance hallway, downstairs cloakroom, living room, modern fitted kitchen with cooker, hob and extractor, and dining space with door to conservatory.

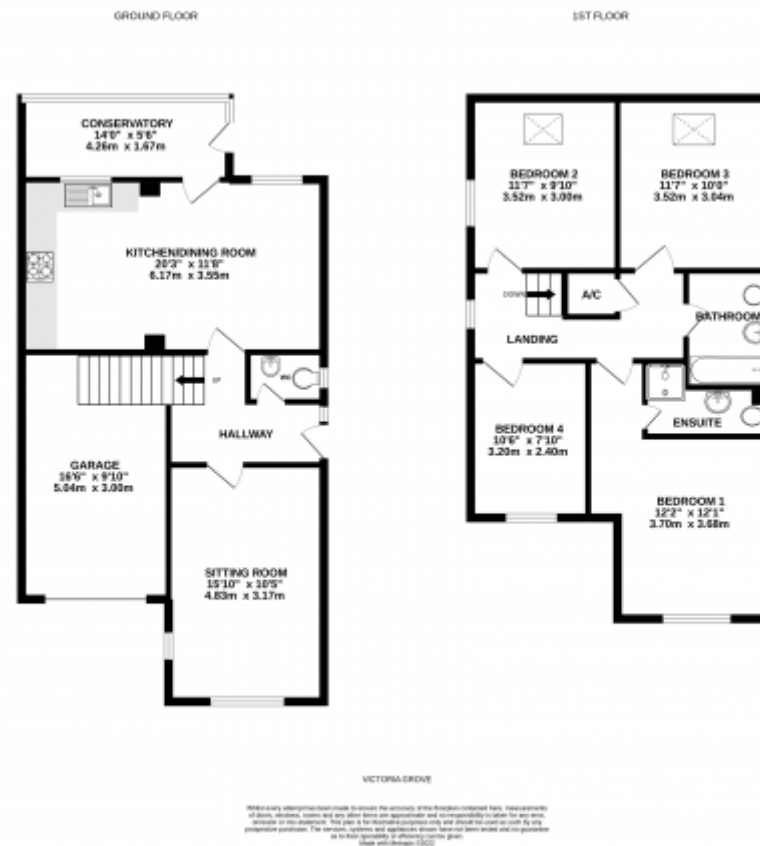
Upstairs, landing with storage, three double bedrooms and one single bedroom, en-suite shower room to master bedroom, and family bathroom with bath.

The property further benefits from gas central heating, UPVC double glazed windows and doors, enclosed rear garden, integral garage and driveway parking.

Offered unfurnished and available now.

Viewings strictly by appointment. Please call us for further information. Sorry, not pets allowed.





This floorplan is for illustrative purposes only and the location of doors, windows and other items are approximate.

Telephone: 01749 681356



www.keyringlettings.co.uk