



£1,250 PCM

Nutts Lane, Rode BA11 6PD

Terraced House | 3 Bedrooms | 1 Bathroom

01749 681356



www.keyringlettings.co.uk



Step Inside

Key Features

- Newly refurbished three bedroom terraced house
- Newly fitted kitchen with appliances
- Newly fitted bathroom with shower over bath
- Living/dining room
- Downstairs cloakroom
- Gas central heating
- UPVC double glazed windows and doors
- Enclosed rear garden

Property Description

A spacious three bedroom house which has been refurbished to a high standard, located in the picturesque village of Rode, close to the local amenities. Offered unfurnished the property boasts newly fitted kitchen and bathroom, double glazed windows and doors, gas c/h and front and rear gardens.

Main Particulars

A spacious three bedroom family home located in the picturesque village of Rode which has been newly refurbished to a very high standard and is situated close to the local amenities.

Offered unfurnished the property comprises: entrance hallway, downstairs cloakroom, open plan living/dining room with doors to rear garden, and a newly fitted kitchen with oven, hob, extractor and dishwasher. The kitchen also has space for a washing machine and fridge/freezer.

Upstairs, two double bedrooms, one single bedroom, landing with airing cupboard, newly fitted bathroom with shower over bath and loft storage space.

The house further benefits from gas fired central heating, UPVC double glazed windows and doors and ample storage.

To the outside there are small front and rear gardens and an external, stone built storage shed. The property has no allocated parking but there is plenty of on road parking in close proximity.

Available early December and pet friendly!

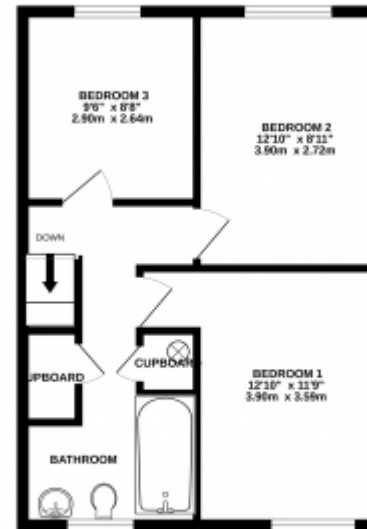
Viewings strictly by appointment only.



GROUND FLOOR



1ST FLOOR



Whilst every attempt has been made to ensure the accuracy of the floorplan contained here, measurements of floor, window, rooms and any other items are approximate and no responsibility is taken for any error, omission or mis-statement. This plan is for illustrative purposes only and should be used as such for any prospective purchase. The services, systems and appliances shown have not been tested and no guarantee as to their operability or efficiency can be given.
Made with Metreplan 03/02

This floorplan is for illustrative purposes only and the location of doors, windows and other items are approximate.

Agents notes: All measurements are approximate and for general guidance only and whilst every attempt has been made to ensure accuracy, they must not be relied on. The fixtures, fittings and appliances referred to have not been

Telephone: 01749 681356



www.keyringlettings.co.uk