



£795 PCM

West Court, South Horrington BA5 3DE

Apartment | 2 Bedrooms | 1 Bathroom

01749 681356



[www.keyringlettings.co.uk](http://www.keyringlettings.co.uk)



# Step Inside

---

## Key Features

- Well presented two bedroom period apartment
- Modern fitted kitchen and bathroom
- Gas central heating
- Many period features
- Well maintained communal grounds
- Allocated parking space, and visitor parking

## Property Description

A well presented two bedroom first floor apartment located in a beautiful Victorian building on the outskirts of Wells. Unfurnished, living room, modern fitted kitchen, inner hallway, modern bathroom, one single bedroom and one double bedroom. Many period features, gas c/h and allocated parking

## Main Particulars

A well presented two bedroom apartment in a beautiful Victorian building on the outskirts of Wells, with well maintained communal grounds. The property is part of an impressive conversion of a Grade II listed building.

Offered unfurnished, the property comprises of a large living room with dining space and bay window. Modern fitted kitchen with cooker and hob. Inner hallway with airing cupboard. Modern bathroom with shower over bath, and one double bedroom with storage, plus one single bedroom.

The apartment further benefits from gas central heating, many period features, door entry system and allocated parking space as well as visitor parking bays. The tenant will also have access to the impressive communal grounds.

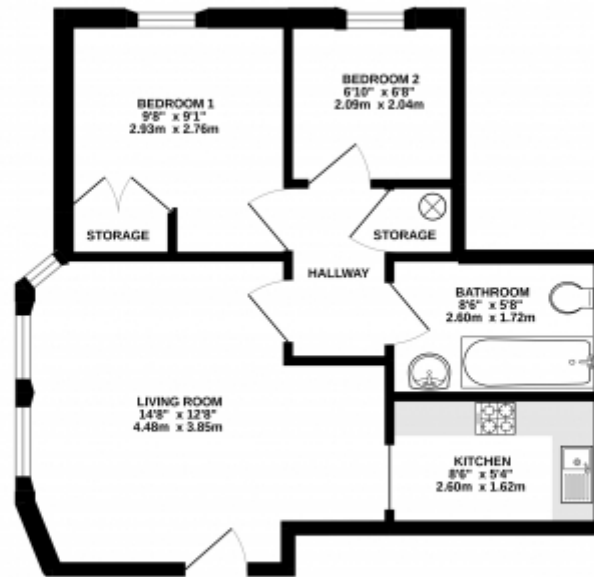
Available now for an initial 12 month tenancy. Sorry, no pets allowed at this property.

Viewings strictly by appointment only.





## GROUND FLOOR



While every attempt has been made to ensure the accuracy of the description contained herein, measurements of doors, windows, rooms and any other thing are approximate and no responsibility is taken for any error, omission or misstatement. This plan is for illustrative purposes only and should not be used as a basis for any prospective purchase. The colour, appearance and appearance of the plan are not guaranteed and no guarantee is given for the accuracy of the plan. (Note: all measurements are in feet)

This floorplan is for illustrative purposes only and the location of doors, windows and other items are approximate.

Telephone: 01749 681356



[www.keyringlettings.co.uk](http://www.keyringlettings.co.uk)